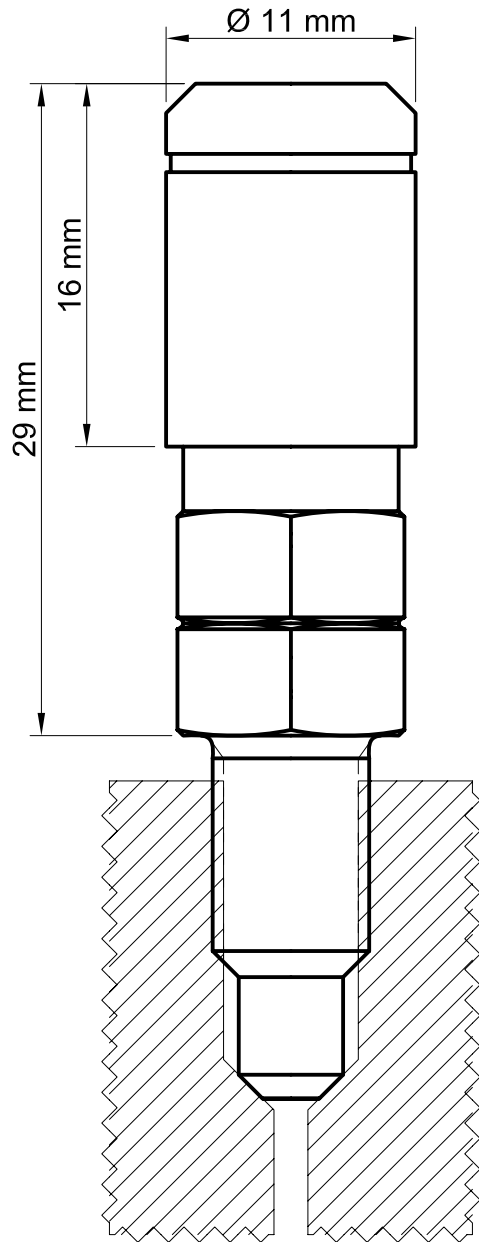


# Einbaumaße stahlbus-Entlüftungsventil

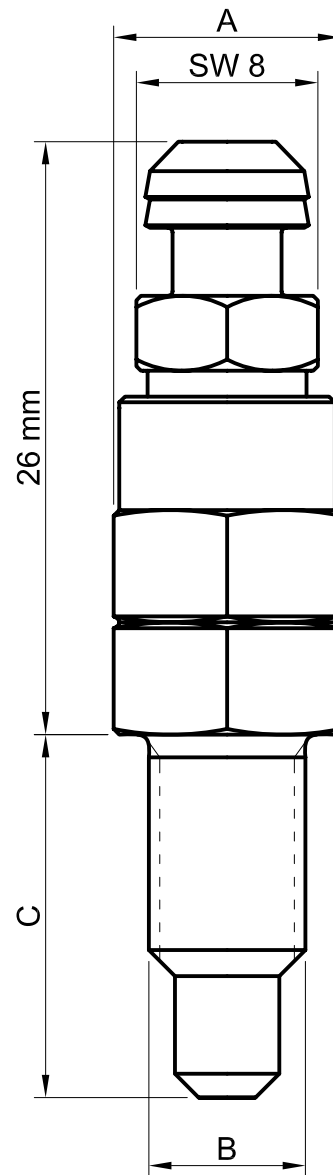
- metrische und zöllige Adapter -

**stahlbus**

stahlbus GmbH  
 Werksstrasse 15 45527 Hattingen  
 Tel: (02324) 90 22 9-22 Fax: -64  
 Email: info@stahlbus.de  
 www.stahlbus.de



mit Kappe



ohne Kappe

Maßtabelle Adapter

Artikelnummer	A	B	C
ES-01-ST-M6x1	SW 10	M6 x 1,0	16 mm
ES-01-ST-M7x1 ES-01-TI-M7x1	SW 10	M7 x 1,0	16 mm
ES-01-ST-M8x1	SW 10	M8 x 1,0	16 mm
ES-01-ST-M8x1,25 ES-01-TI-M8x1,25	SW 10	M8 x 1,25	16 mm
ES-01-ST-M10x1S	SW 10	M10 x 1,0	14 mm
ES-01-ST-M10x1M ES-01-TI-M10x1M	SW 10	M10 x 1,0	16 mm
ES-01-ST-M10x1L	SW 10	M10 x 1,0	20 mm
ES-01-ST-Z1/4	SW 7/16"	1/4-28 UNF	16 mm
ES-01-ST-Z3/8M	SW 7/16"	3/8-24 UNF	16 mm
ES-01-ST-Z3/8L	SW 7/16"	3/8-24 UNF	22 mm